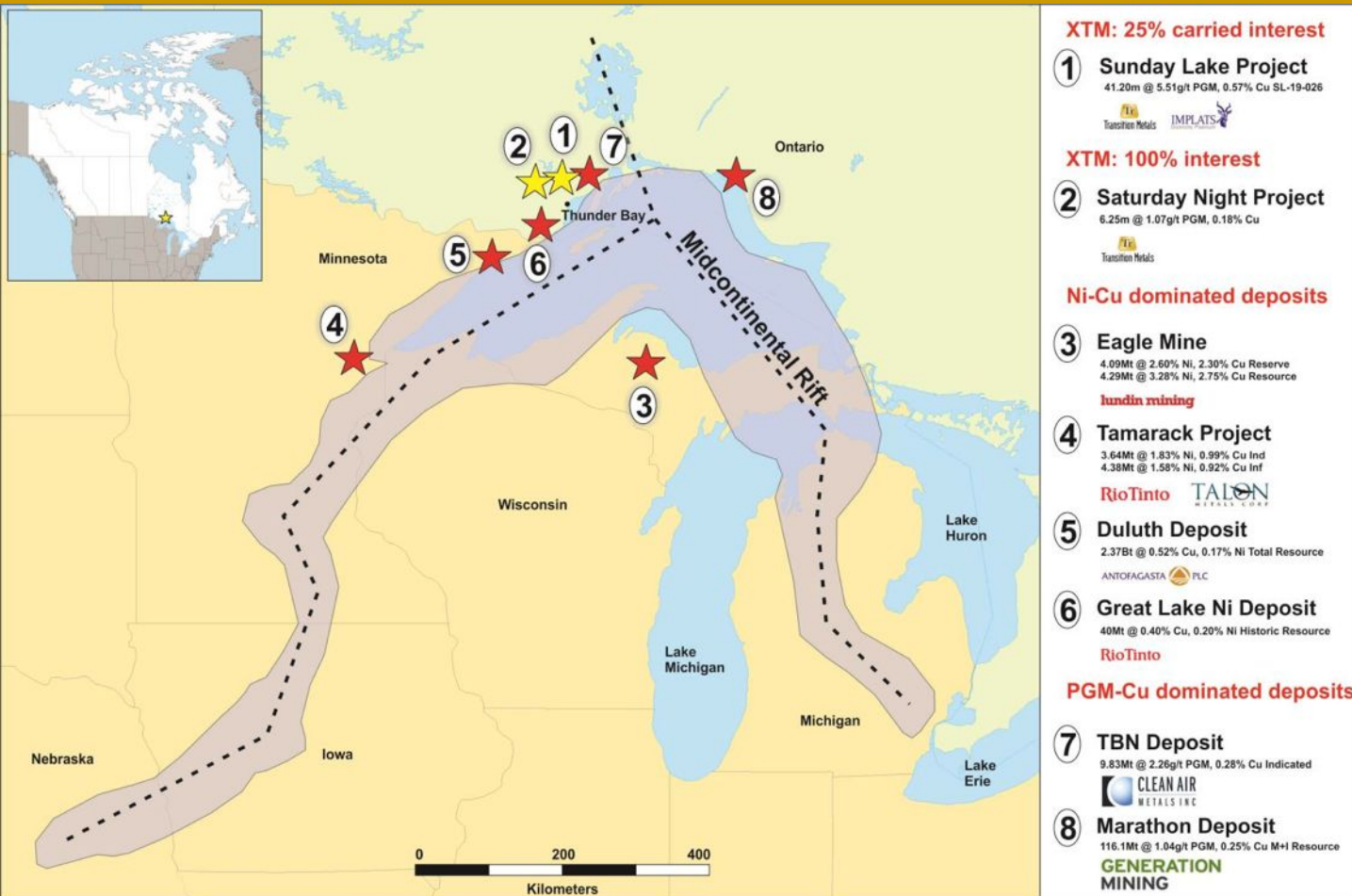


## Saturday Night Platinum-Palladium Project

- PGM-Cu-Ni project is located 25 km north of the city of Thunder Bay, Ontario and 16 km west of the Sunday Lake Project (25% owned by XTM).
- Defined by a strong, prominent circular remnant magnetic anomaly, similar to anomalies associated with the Sunday Lake and other MRC-related intrusions.
- SN-16-001 tested a portion of the magnetic anomaly and intersected a mafic-ultramafic layered intrusion over a core length of 225.25m.
- PGM-Cu-Ni mineralization was encountered near the base of the intrusion and returned values of **1.07g/t PGM's over 6.25m** including a higher grade section of **4.0 g/t PGM, 0.56% Cu over 0.30m**.
- A 37 station PULSAR MT survey was completed in 2018 and an additional 235 hectares were added to the project to cover the possible extensions of the Saturday Night Intrusion as identified by the MT survey.

### Midcontinental Rift Area



**XTM: 25% carried interest**

**1 Sunday Lake Project**  
41.20m @ 5.51g/t PGM, 0.57% Cu SL-19-026



**XTM: 100% interest**

**2 Saturday Night Project**  
6.25m @ 1.07g/t PGM, 0.18% Cu



**Ni-Cu dominated deposits**

**3 Eagle Mine**  
4.09Mt @ 2.60% Ni, 2.30% Cu Reserve  
4.29Mt @ 3.28% Ni, 2.75% Cu Resource

**lundin mining**

**4 Tamarack Project**  
3.64Mt @ 1.83% Ni, 0.99% Cu Ind  
4.38Mt @ 1.58% Ni, 0.92% Cu Inf



**5 Duluth Deposit**  
2.37Bt @ 0.52% Cu, 0.17% Ni Total Resource

**ANTOFAGASTA PLC**

**6 Great Lake Ni Deposit**  
40Mt @ 0.40% Cu, 0.20% Ni Historic Resource

**RioTinto**

**PGM-Cu dominated deposits**

**7 TBN Deposit**  
9.83Mt @ 2.26g/t PGM, 0.28% Cu Indicated

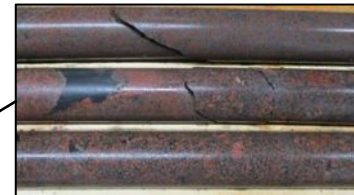
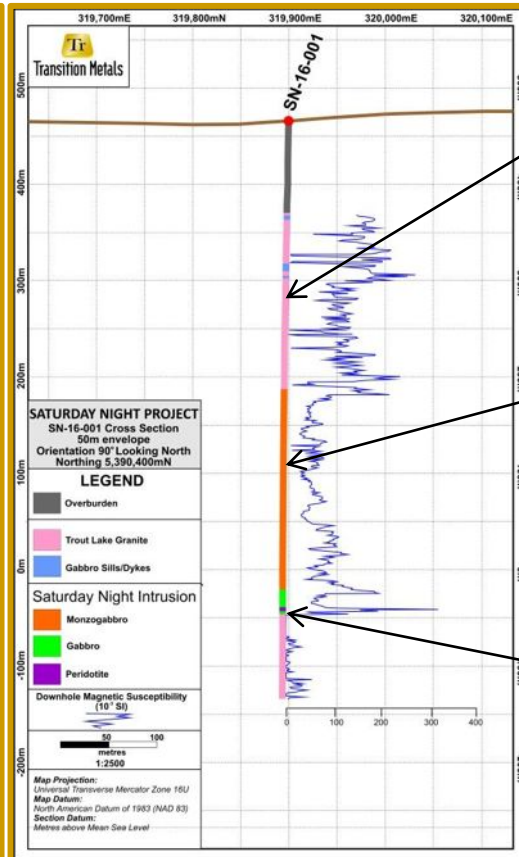
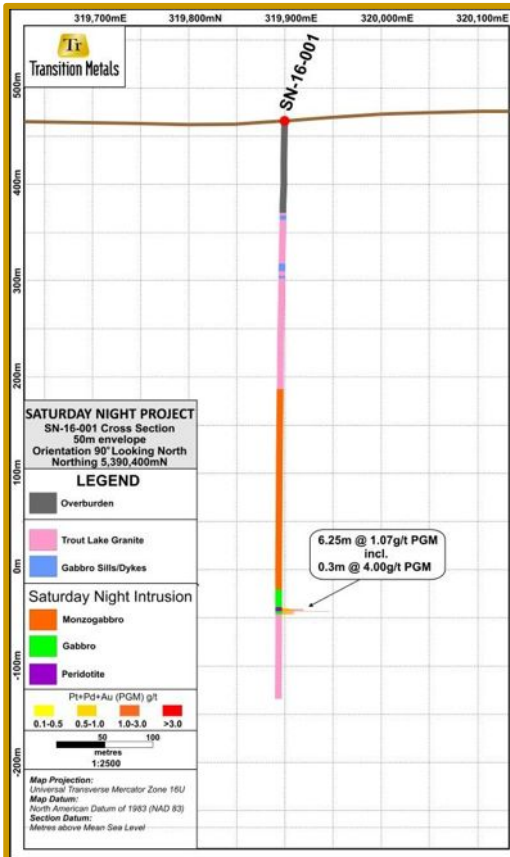
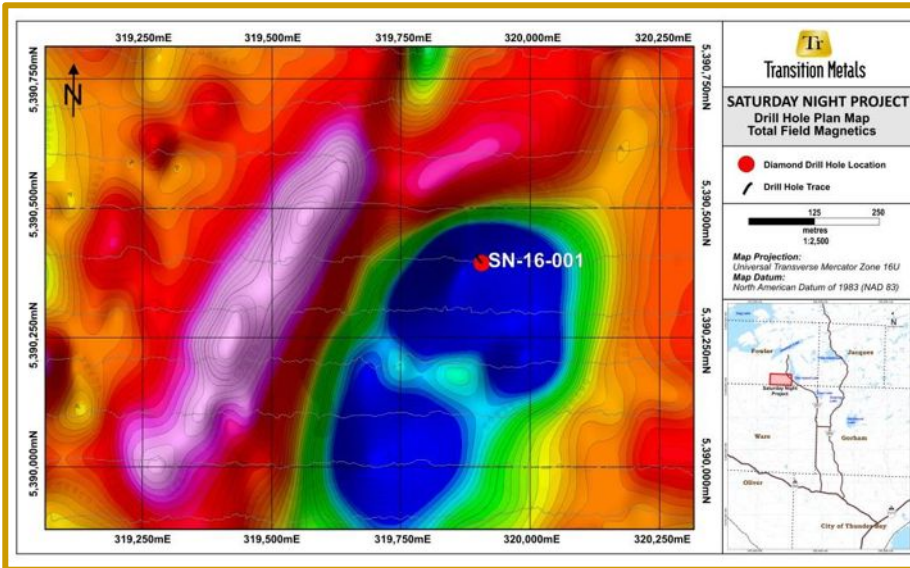


**8 Marathon Deposit**  
116.1Mt @ 1.04g/t PGM, 0.25% Cu M+I Resource

**GENERATION MINING**

### Geology

- Hosted within Midcontinent Rift related intrusive rocks similar to the other Ni-Cu-PGM deposits (TBN, Eagle, Tamarack, Sunday Lake)
- Prominent remnant magnetic anomaly has a diameter of 800m and has been tested by a single diamond drill hole
- Intense brecciation and alteration of overlying country rocks is comparable in scale to that observed at the Sunday Lake Intrusion



Altered granite country rocks



Monzogabbro



Chalcopyrite in mineralized melagabbro