



Transition Metals

Doherty Lake Project

Potential for Lode and Paleoplacer Gold Systems

Au

Ni

Cu

Pt

XTM – TSXV

Doherty

Potential for Lode and Paleoplacer Gold Systems

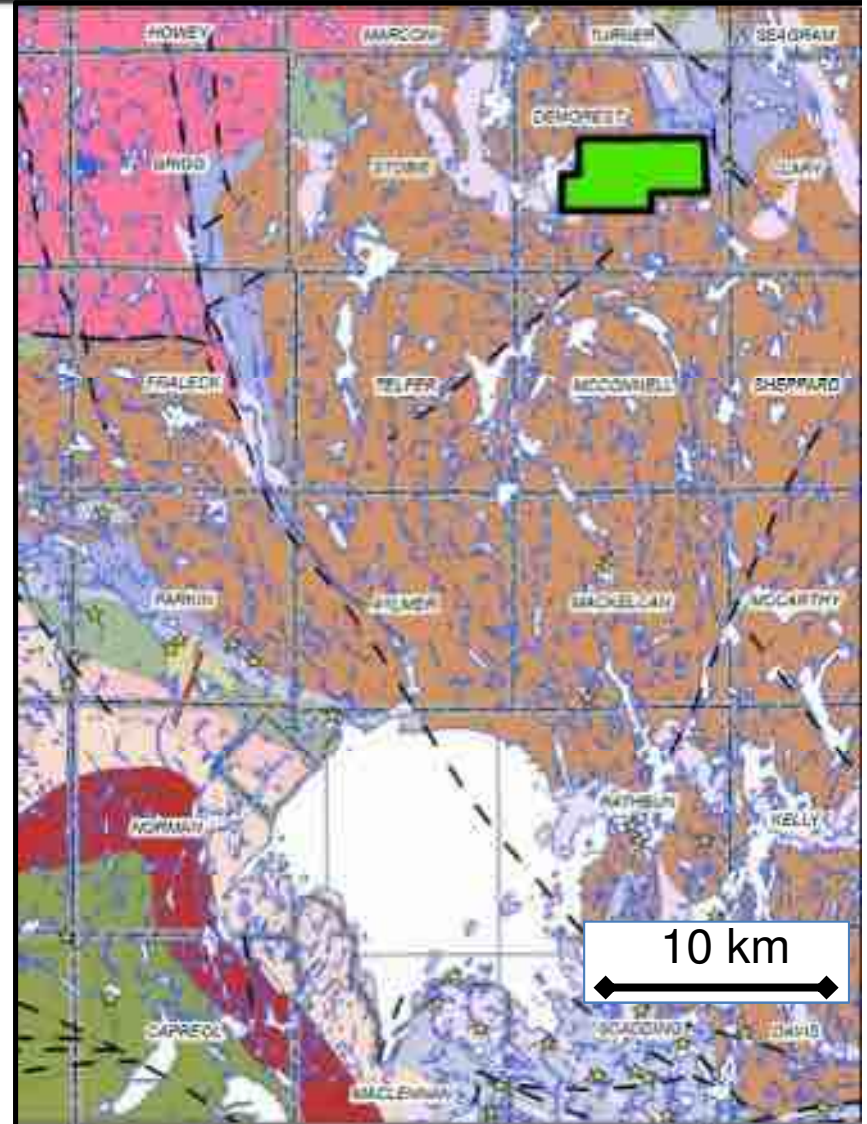


Transition Metals

- Located ~ 60 km northeast of Sudbury
- Shallowly dipping quartz-carbonate veining
- Grab values up to 2.25 oz/t Au and 45 oz/t Ag
- Strongly developed shear zone at contact between Nipissing gabbro - Huronian sediments
- Wallbridge - 2008 combined weighted average of all channel samples 37m @ 0.93% Cu, 2.64 oz/t Ag, 0.02 oz/t Au
- Transition Metals Corp. – 2011: 8 hole, 520 metre - up to 0.66 g/t Au and 1.0 to 183 g/t Ag.
- Mineralization is open along strike and down dip.

Next Steps

- Surface or airborne geophysics to identify large scale conductive features associated with shear
- Evaluate potential in the Huronian Group sediments for hosting Precambrian paleo-placer gold in the basal portions of the Huronian



Doherty

Ontario Gold Projects

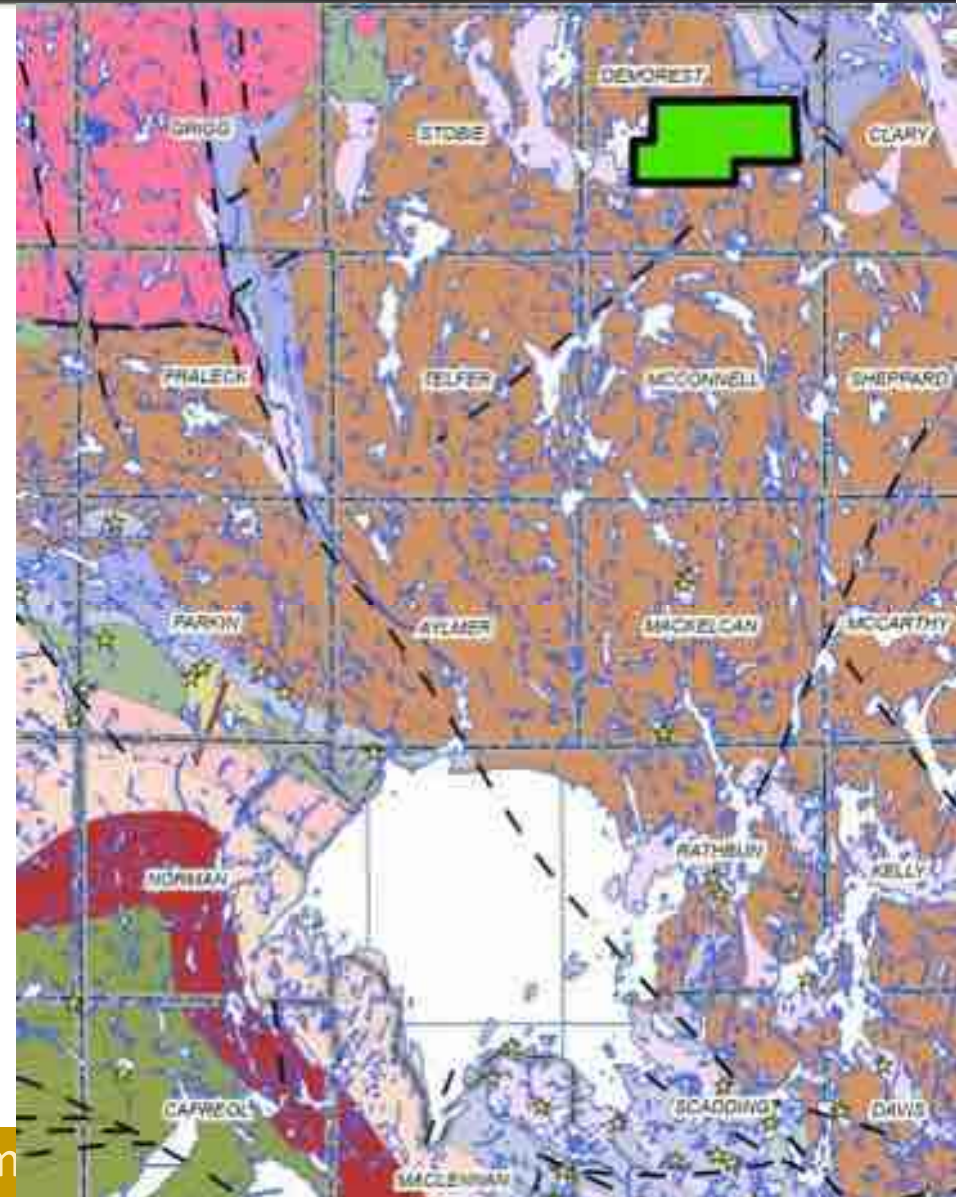


LOCATION

- ~60 km NE of Sudbury
- 12 claims ~1,920 ha

Geology

- Huronian Supergroup
Gowganda Formation and
overlying Lorrain Formation
- intruded by the Nipissing Gabbro



Doherty

Ontario Gold Projects



HISTORY

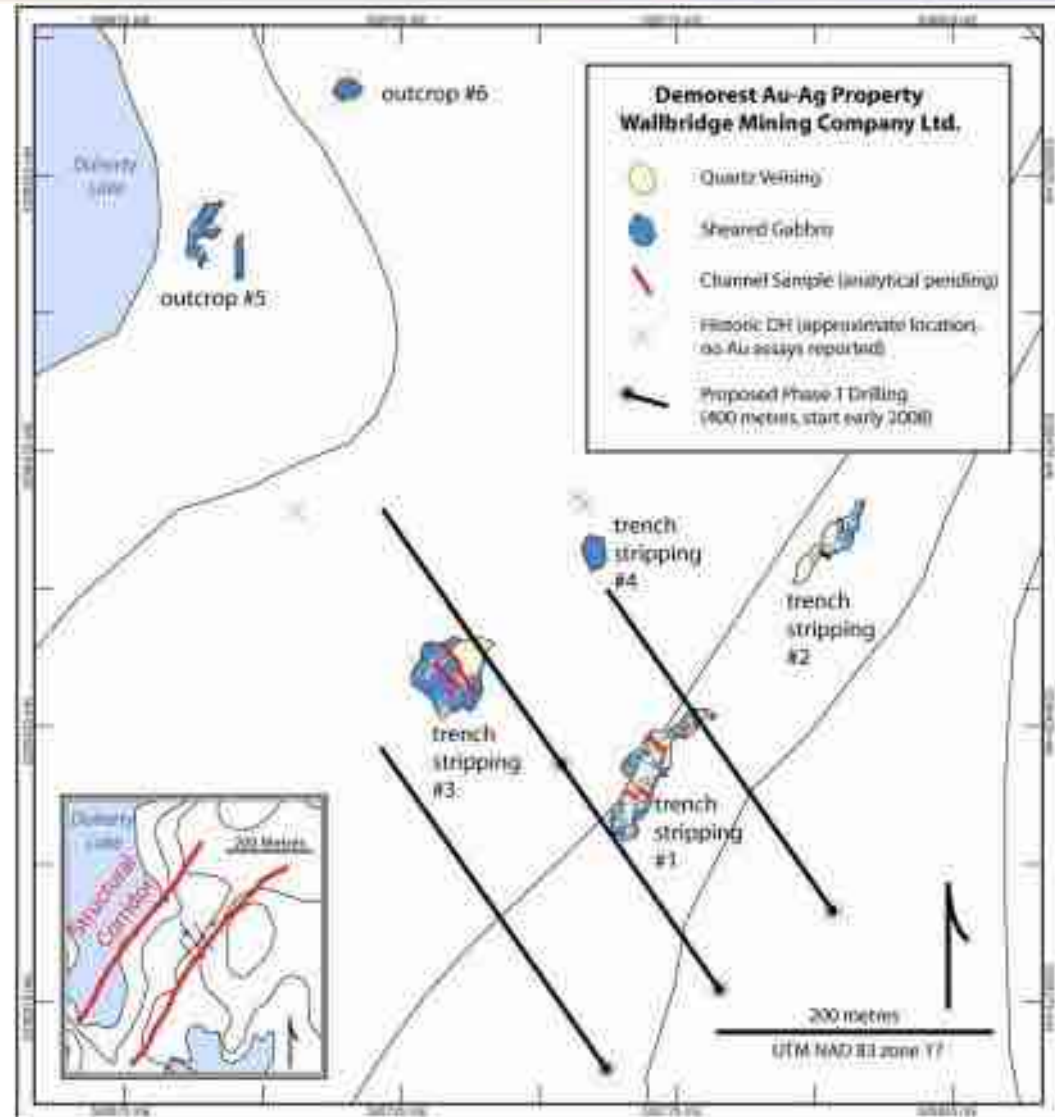
1970 Kennco Exploration Limited
8 ddh totalling 203.3 m
up to 0.23% Cur and 1.5% Zn

1995 Dan Patrie:
ground magnetic and VLF survey

2006 Albert Leblanc and David Morrison
samples returned 0.2 oz/ton Au
and 2.1 oz/ton Au

2006-07 Wallbridge Mining:
stripping, mapping and channel
sampling in 6 areas

- Ag-Au-Cu-Pb in qtz-carb veins in NE shear cutting Nipissing
- Combined average of all channel samples returned 37m @ 0.93% Cu, 2.64 oz/t Ag, 0.02 oz/t Au



Doherty Ontario Gold Projects



Transition Metals

2011

- 8 ddh totalling 520 meters
- up to 0.66 g/t Au and 1.0 to 183 g/t Ag
- Mineralization is open along strike and down dip

